

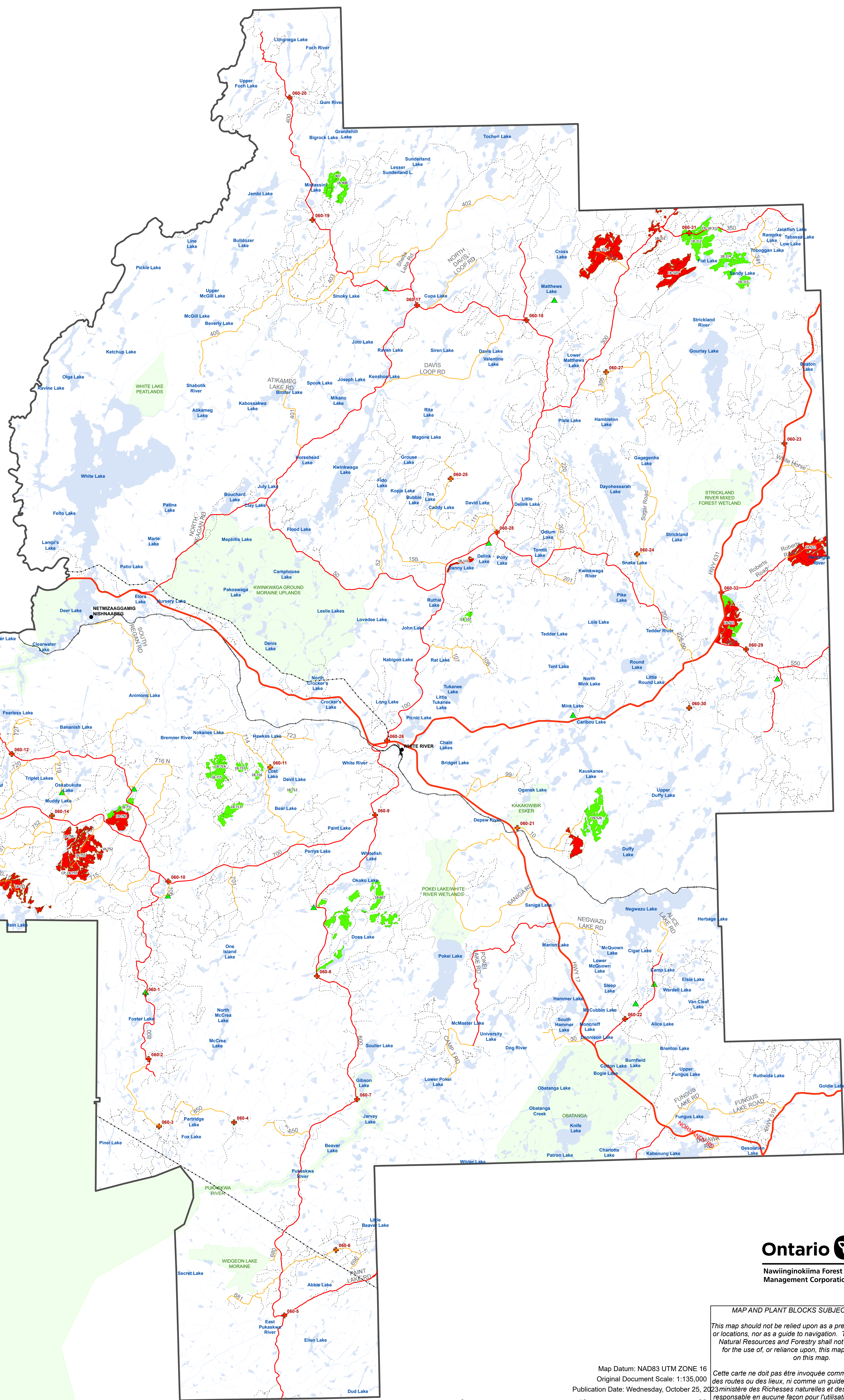
# White River Forest

## 2024 Tree Plant Contractor Index Grid

- ▲ Camp Locations
- Community
- + Marshalling Stations
- Utility Line
- Rail
- Highway
- Primary Road
- Municipal/Other Road
- Branch Road
- Operational Road
- Streams
- Lakes
- ▭ White River Forest Boundary
- ▭ Seed Zone
- ▭ Priority
- ▭ Overflow

Block ID	Category	Area (Ha)
13-720	Overflow	191.03
18-107	Plant	39.44
18-110	Overflow	35.8
18-310	Overflow	515.17
18-311	Overflow	84.57
18-312	Plant	338.94
18-314	Plant	207.7
18-315	Plant	66.32
18-320	Overflow	375.89
18-408	Plant	119.96
18-501	Plant	77.57
18-501	Overflow	351.88
18-522	Overflow	421.73
18-526	Plant	331.14
18-526	Overflow	127.08
18-607	Plant	450.74
18-712	Plant	10.04
18-713	Plant	131.15
18-714	Plant	146.49
18-715	Plant	78.45
18-716	Plant	33.26
18-717	Plant	38.97
18-717	Overflow	0
18-720	Overflow	145.44
18-721	Overflow	246.88
18-731	Plant	40.29
18-750	Plant	29.99
18-750	Overflow	191.43
18-752	Overflow	2.23
18-755	Overflow	681.6
18-756	Overflow	37.94
407	Plant	107.75
720	Overflow	108.3
CP-18-312	Plant	18.32
CP-18-755	Overflow	1.68

Pukaskwa National Park



MAP AND PLANT BLOCKS SUBJECT TO CHANGE

*This map should not be relied upon as a precise indicator of routes or locations, nor as a guide to navigation. The Ontario Ministry of Natural Resources and Forestry shall not be liable in any way for the use of, or reliance upon, this map or any information on this map.*

*Cette carte ne doit pas être invoquée comme un indicateur précis des routes ou des lieux, ni comme un guide pour la navigation. Le ministère des Richesses naturelles et des Forêts ne sera pas responsable en aucune façon pour l'utilisation de, ou l'appui à cette carte ou tout autre renseignement sur cette carte.*

Map Datum: NAD83 UTM ZONE 16  
 Original Document Scale: 1:135,000  
 Publication Date: Wednesday, October 25, 2023

